

## **65 Parameterizations selected during sensitivity analyses of Alternate Mechanism Composite 4**

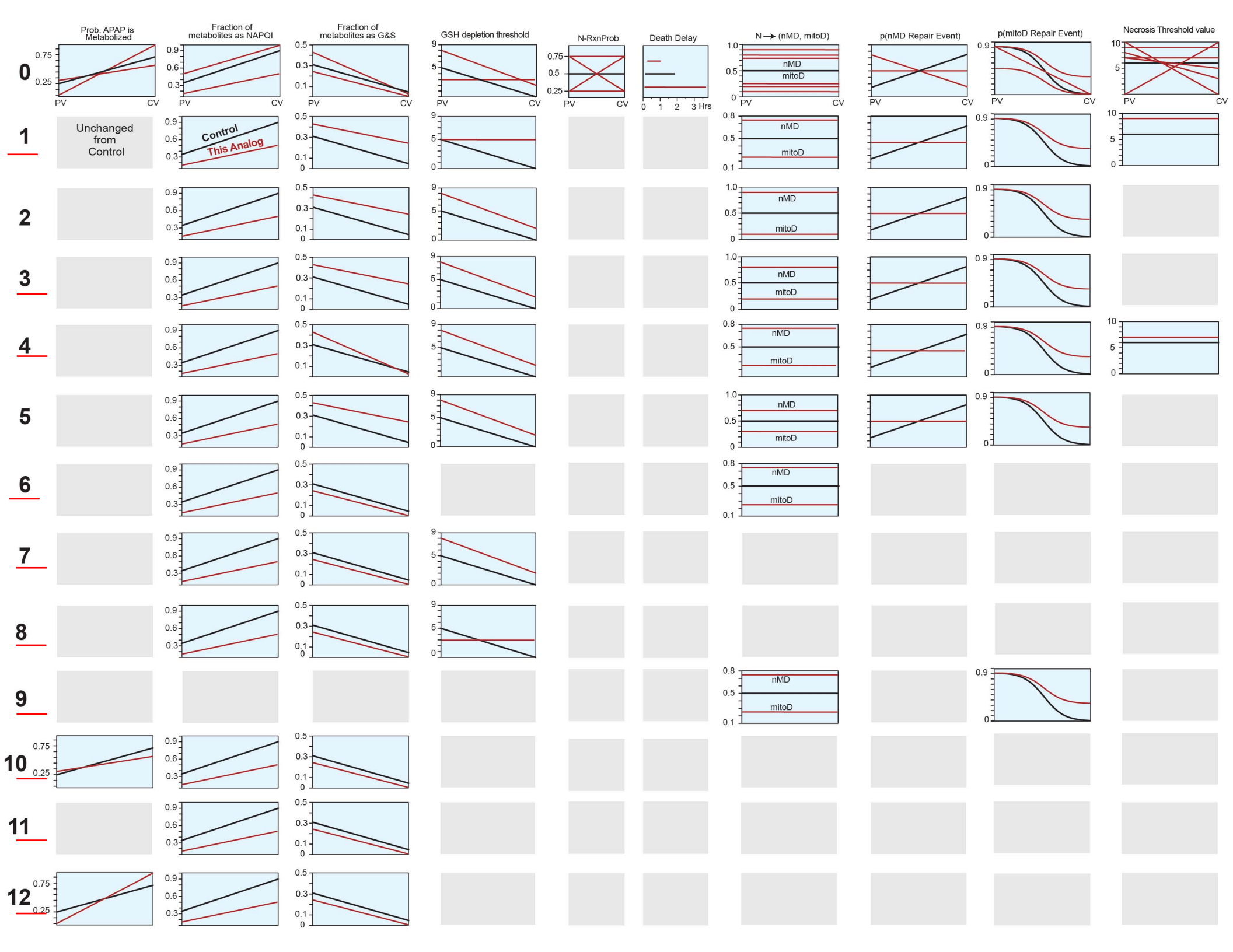
Each row specifies a different parameterization and mechanism. We conjecture that such mechanism differences will map to differences in strains of mice and, in the case of humans, to interindividual differences.

Row 35 shows parameterizations for **Standard** (= Alternate Mechanism Composite 4), which is labeled Control in this table.

Row 0 shows all the parameterizations. Black lines are Standard parameterizations. Each red line is an alternative parameterization used in one or more of the other 64.

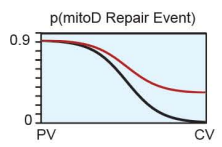
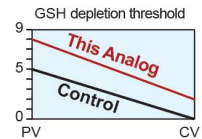
Each graph in each row indicates a changed parameter. The red line shows the parameterization for that mechanism. For comparison, the black line shows the parameterization for Standard (Control). Gray box: no change.

Highlighted parameterization numbers were mapped to one of the 37 mouse strains in Harrill AH, et al. (PMC2752130).

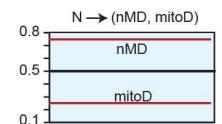
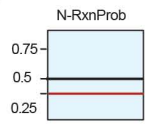


13

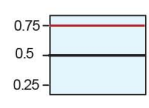
Unchanged from Control



14



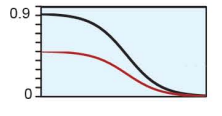
15



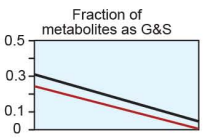
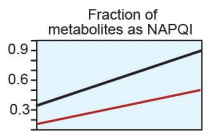
16



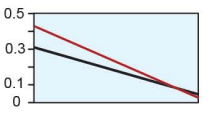
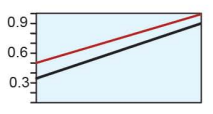
17



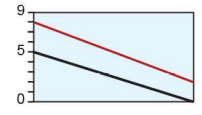
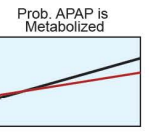
18



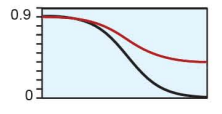
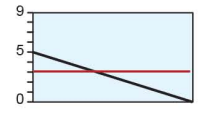
19



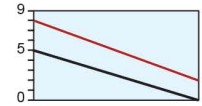
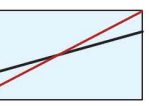
20



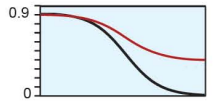
21



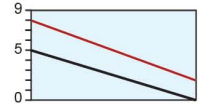
22

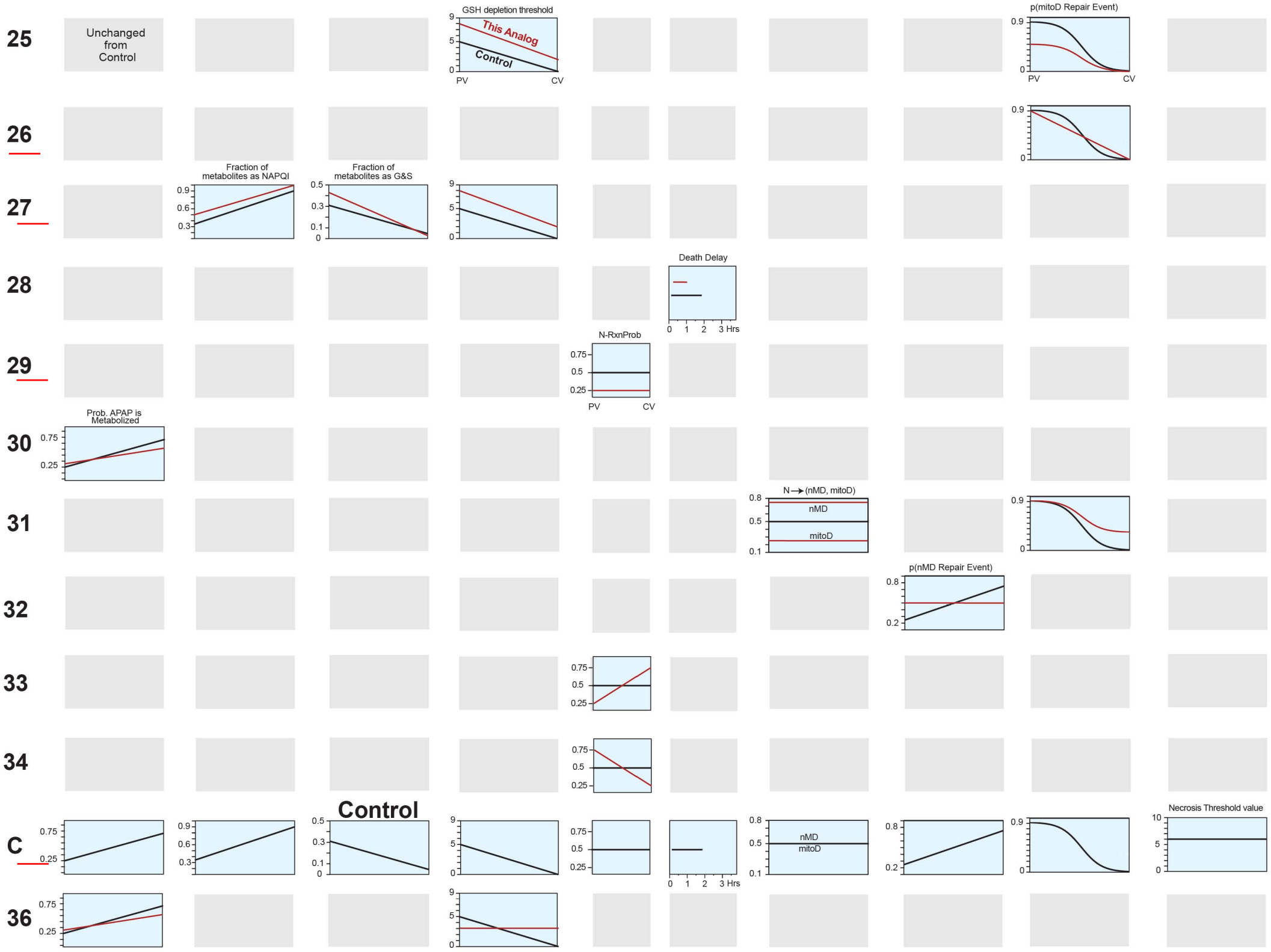


23



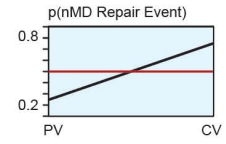
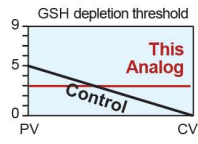
24





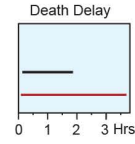
**37**

Unchanged from Control



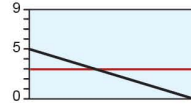
**38**

**39**

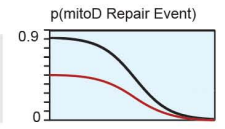
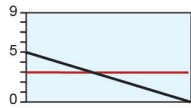


**40**

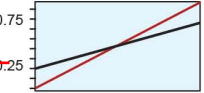
Prob. APAP is Metabolized



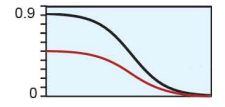
**41**



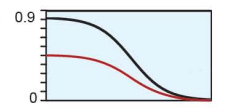
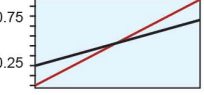
**42**



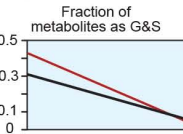
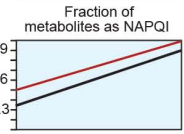
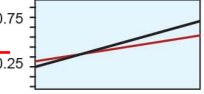
**43**



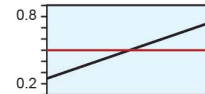
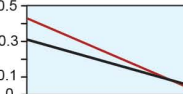
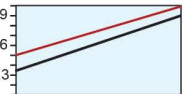
**44**



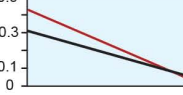
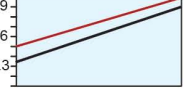
**45**



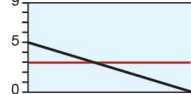
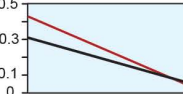
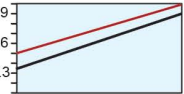
**46**

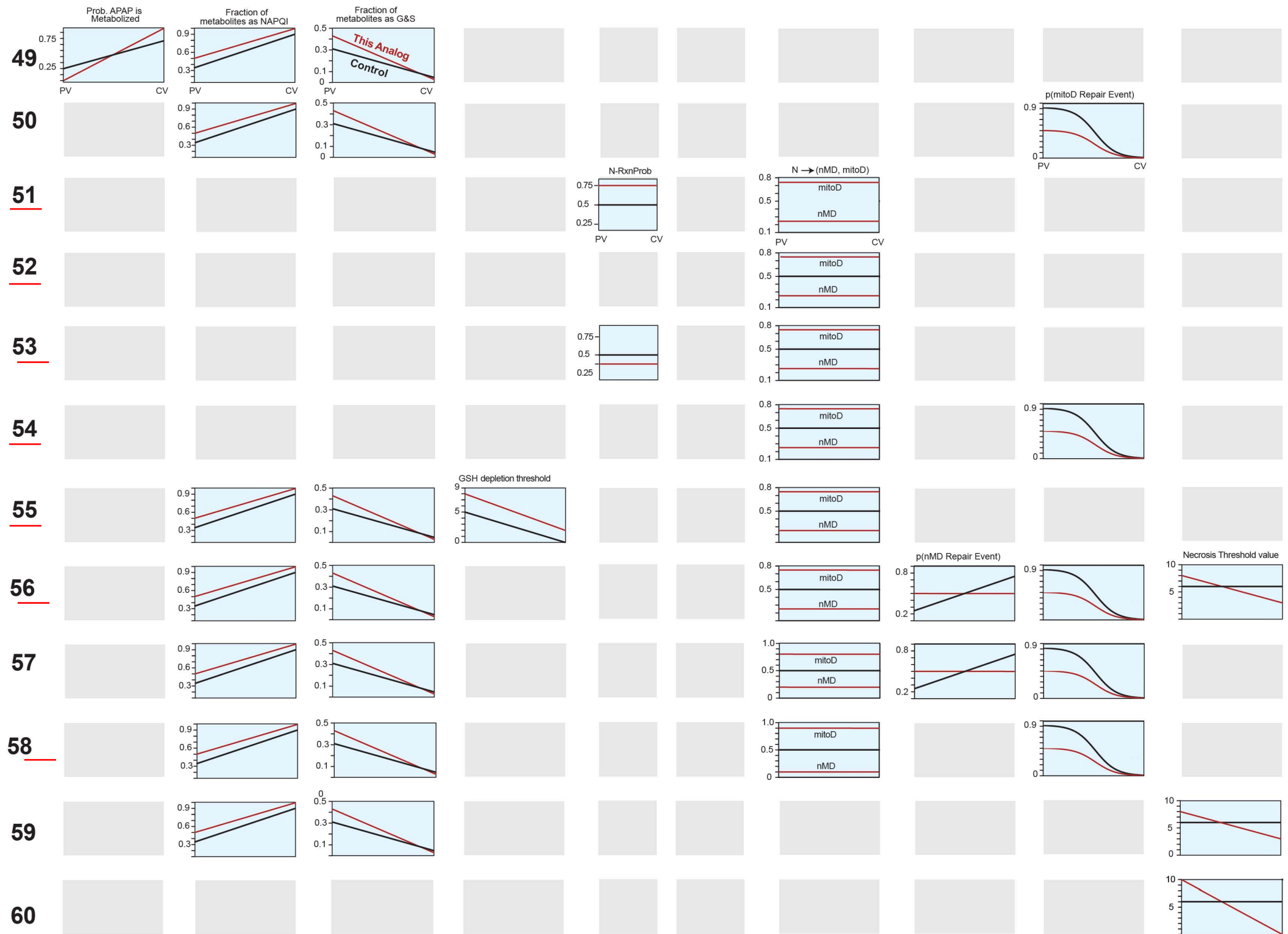


**47**



**48**





61



62



63



64



65

