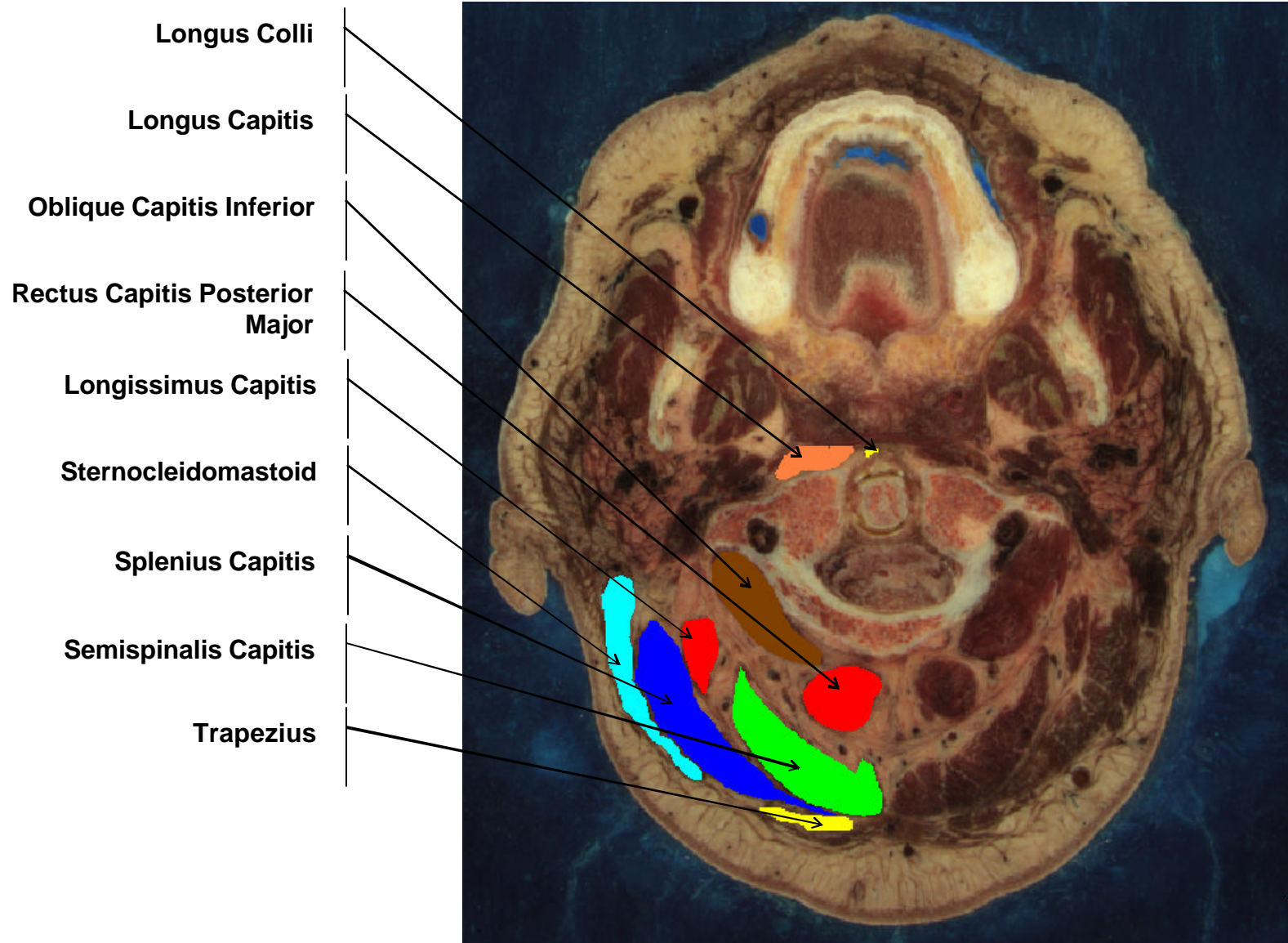
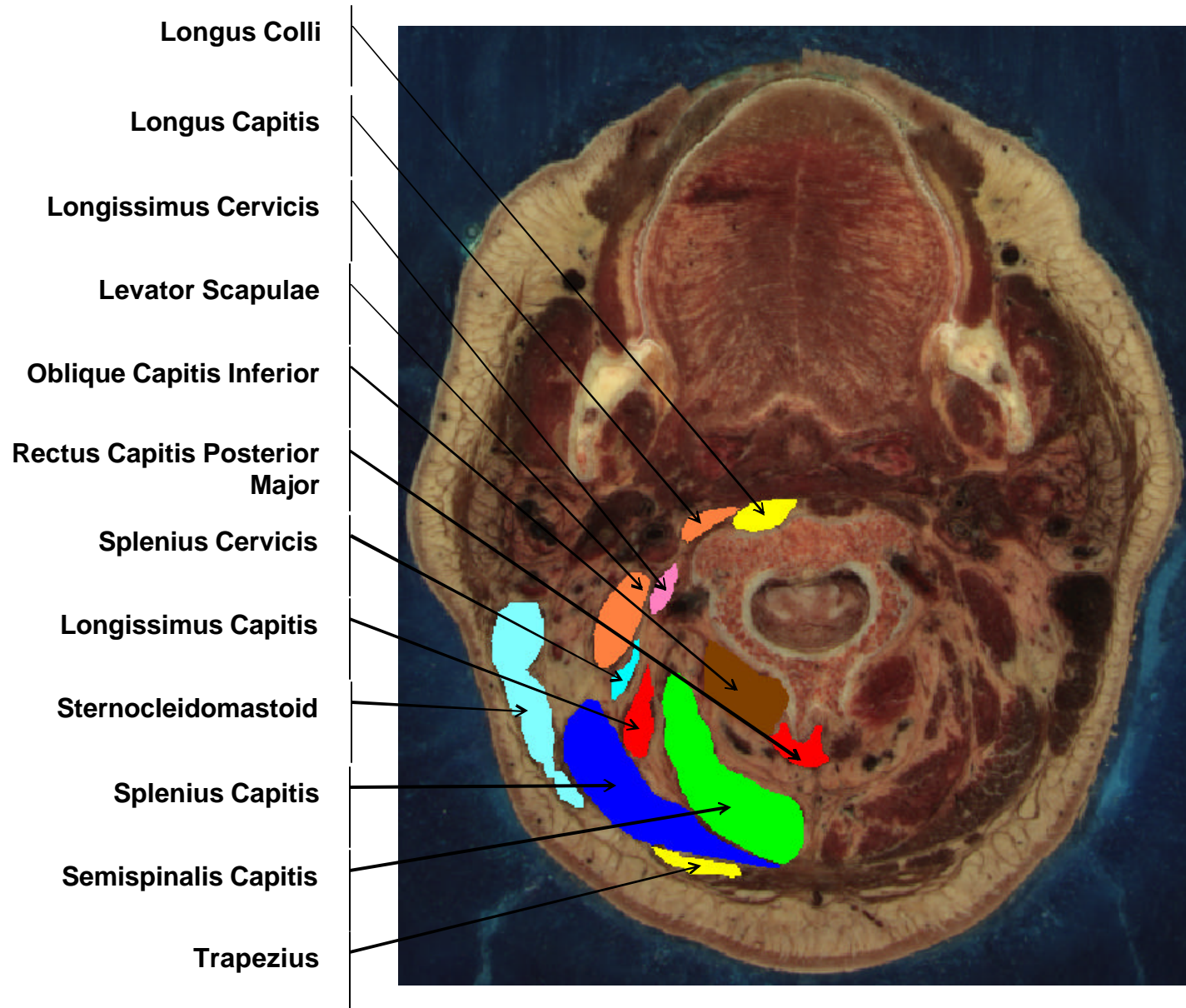


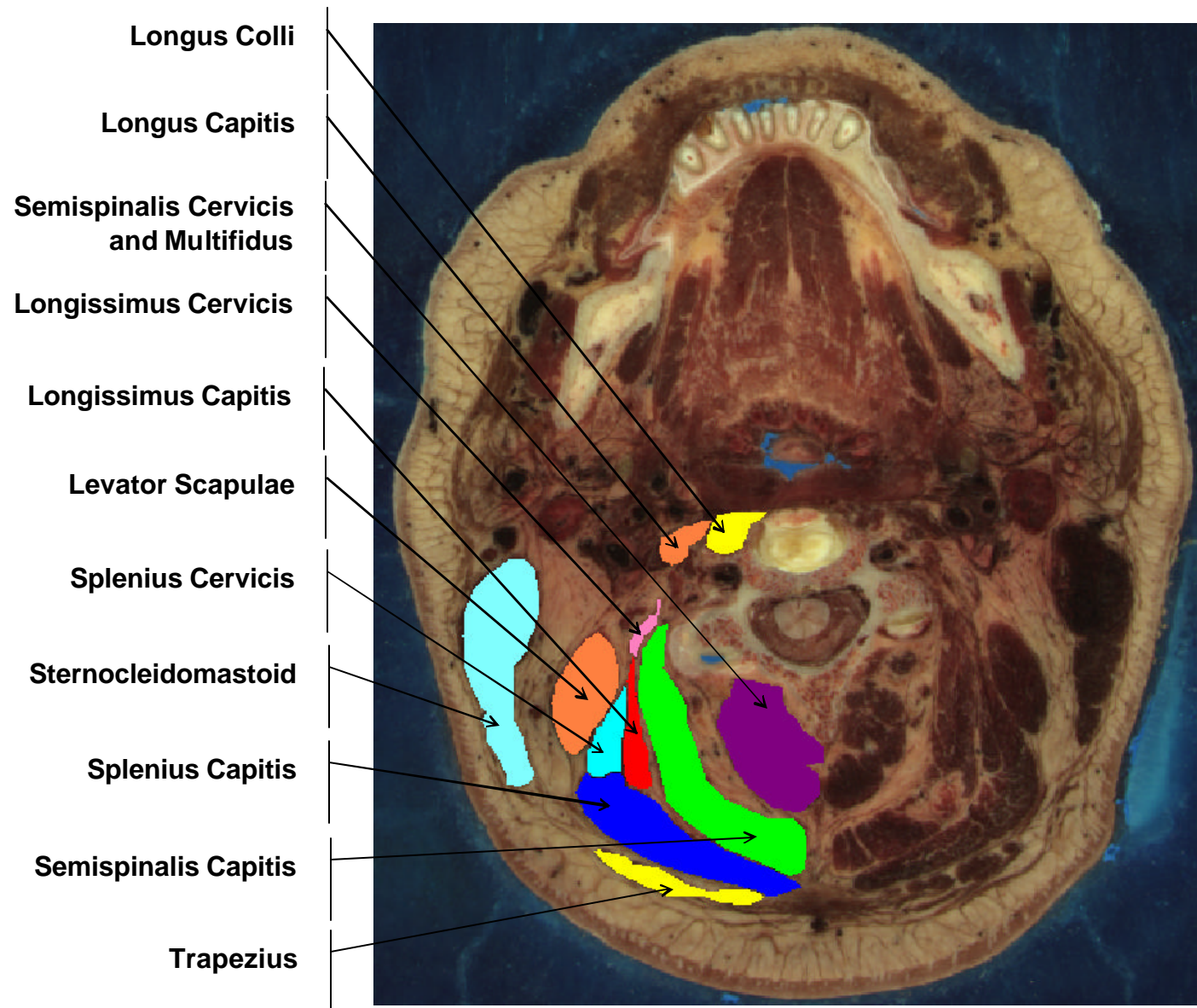
Visible Human Female Cryosection Photograph of C1 with Neck Muscles Identified



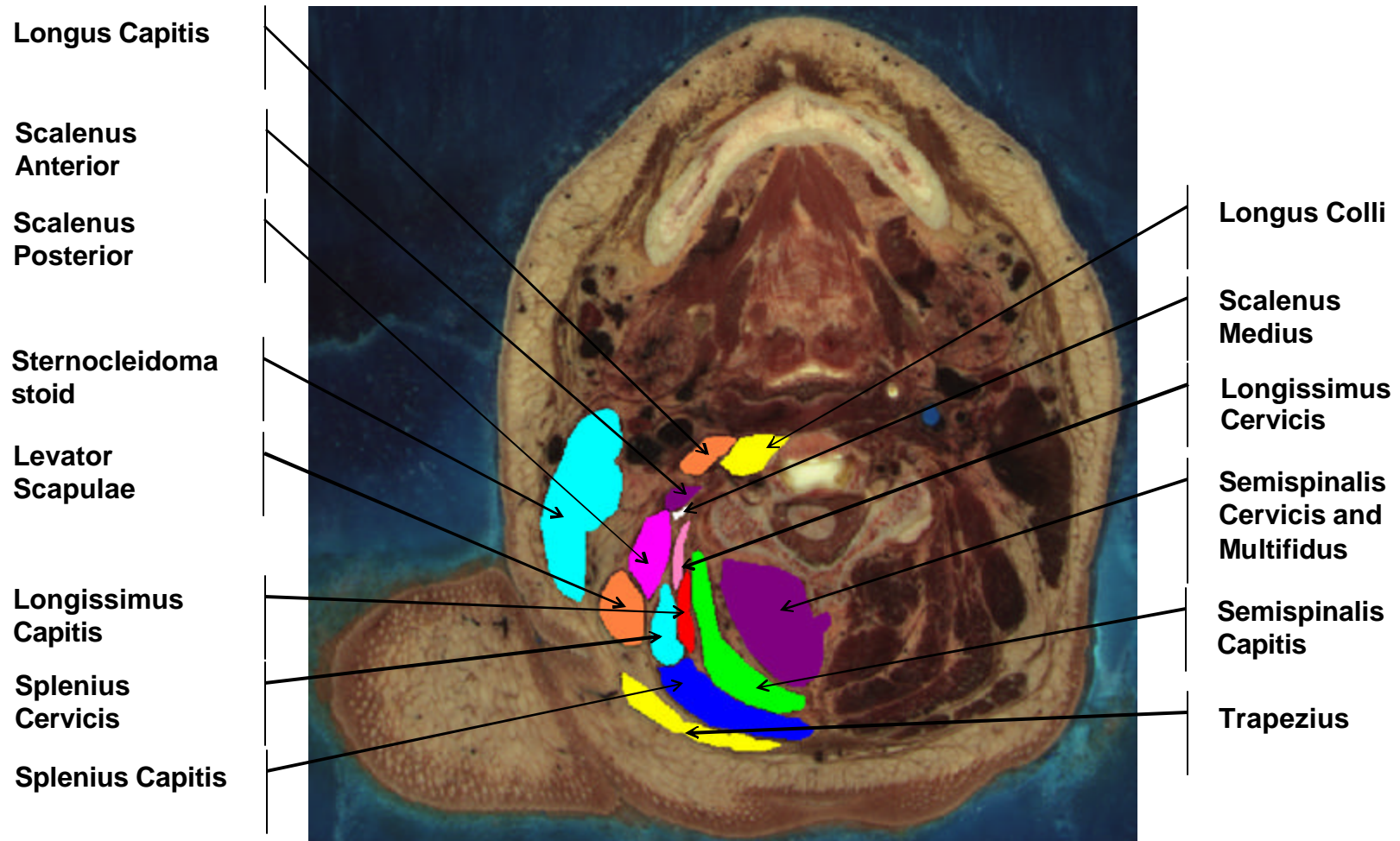
Visible Human Female Cryosection Photograph of C2 with Neck Muscles Identified



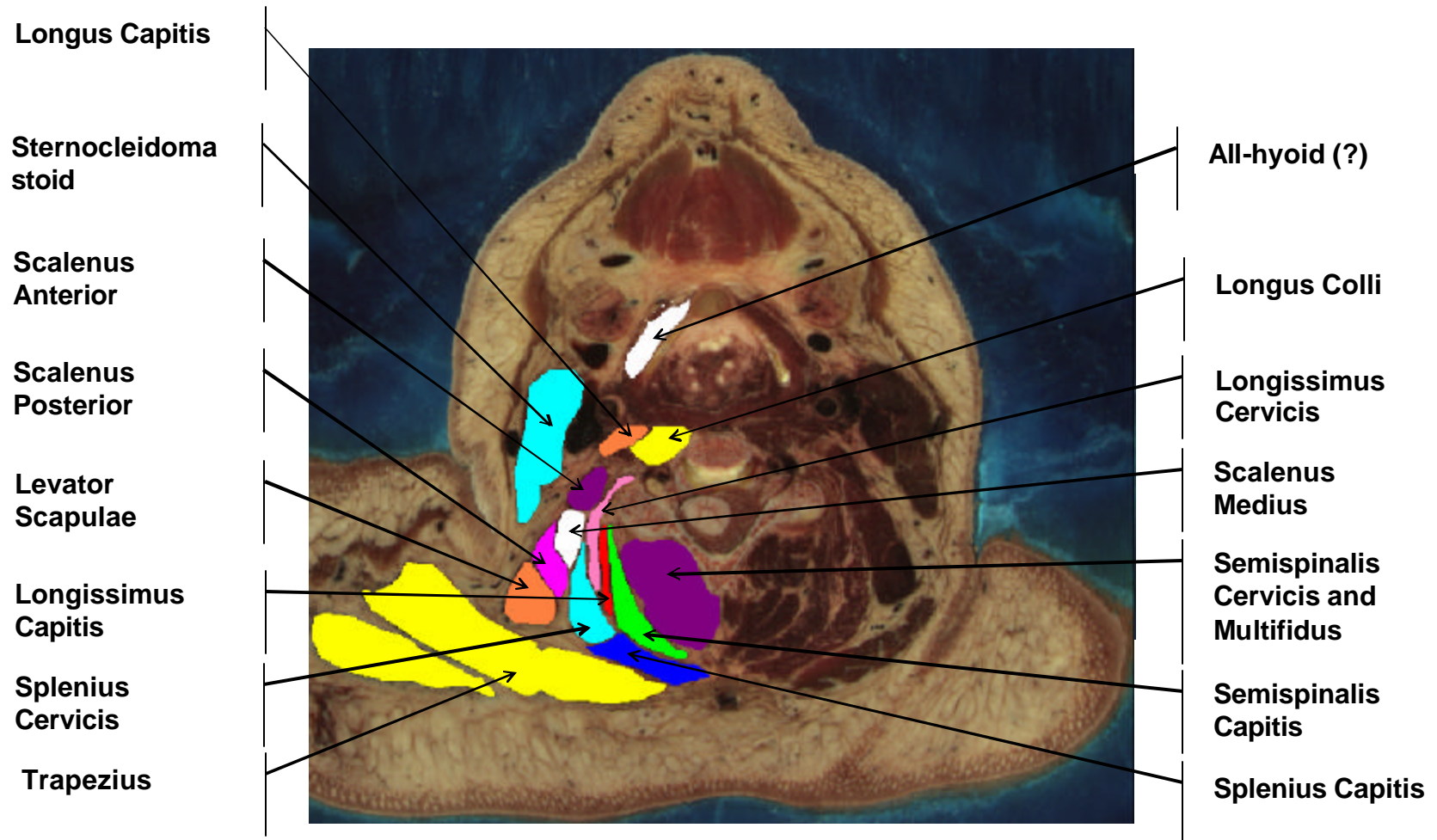
Visible Human Female Cryosection Photograph of C3 with Neck Muscles Identified



Visible Human Female Cryosection Photograph of C4 with Neck Muscles Identified



Visible Human Female Cryosection Photograph of C5 with Neck Muscles Identified



Visible Human Female Cryosection Photograph of C6 with Neck Muscles Identified

Longus Capitis

**Sternocleidoma
stoid**

**Scalenus
Anterior**

**Scalenus
Medius**

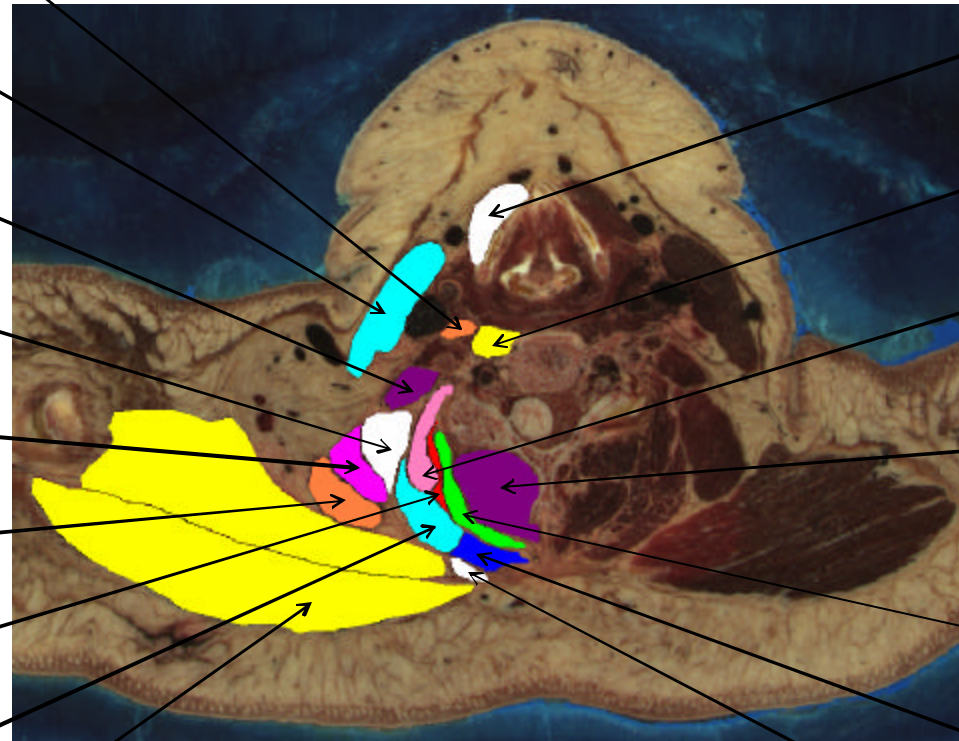
**Scalenus
Posterior**

**Levator
Scapulae**

**Longissimus
Capitis**

**Splenius
Cervicis**

Trapezius



All-hyoid (?)

Longus Colli

**Longissimus
Cervicis**

**Semispinalis
Cervicis and
Multifidus**

**Semispinalis
Capitis**

Splenius Capitis

**Rhomboideus
minor**

Visible Human Female Cryosection Photograph of C7 with Neck Muscles Identified

